
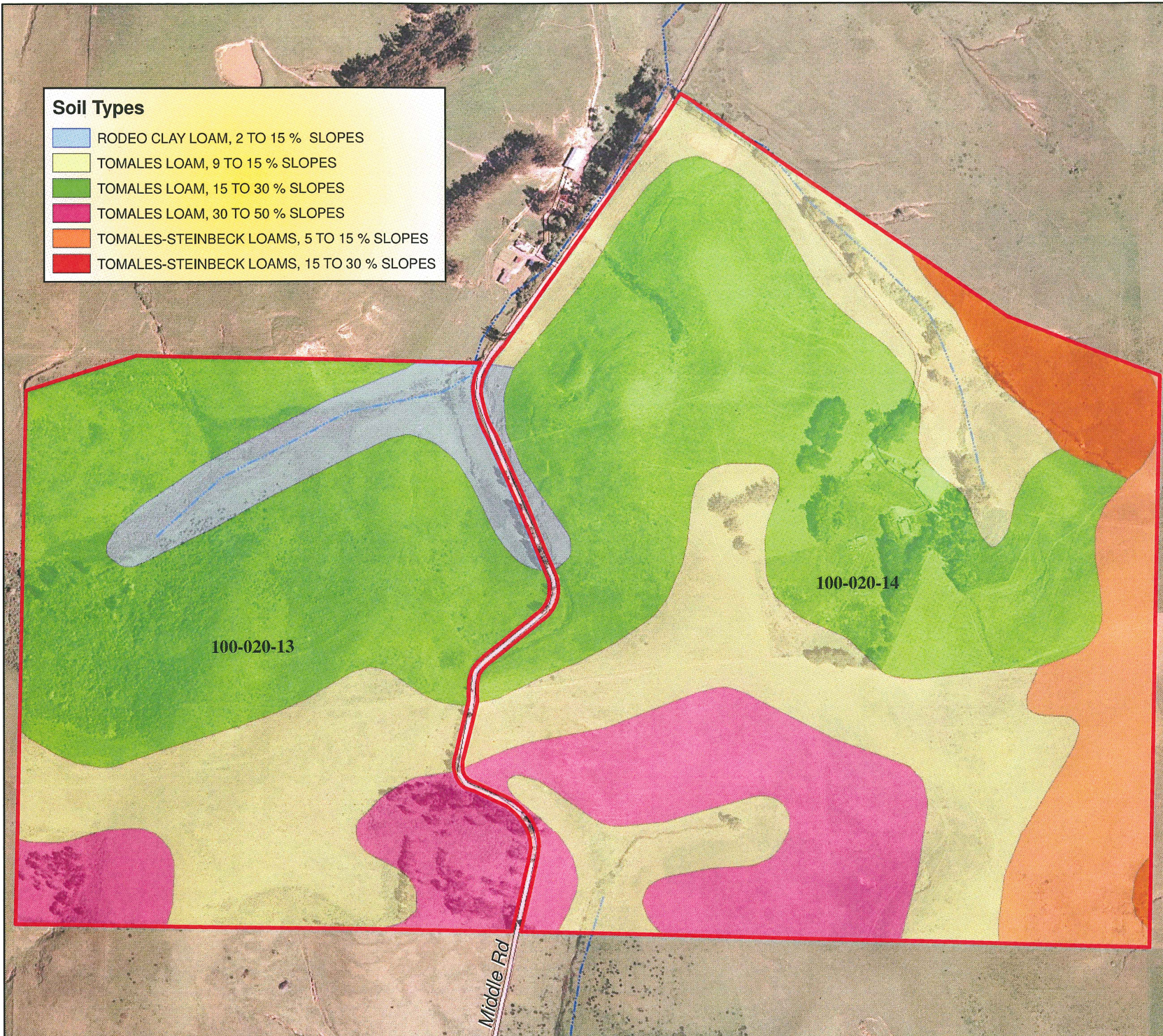


Reimer Ranch

Soil Types

-  RODEO CLAY LOAM, 2 TO 15 % SLOPES
-  TOMALES LOAM, 9 TO 15 % SLOPES
-  TOMALES LOAM, 15 TO 30 % SLOPES
-  TOMALES LOAM, 30 TO 50 % SLOPES
-  TOMALES-STEINBECK LOAMS, 5 TO 15 % SLOPES
-  TOMALES-STEINBECK LOAMS, 15 TO 30 % SLOPES

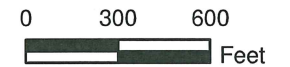
 Assessor Parcels



Century 21
Bundesen
karl@bundesen.com
707-769-7100



1 inch = 600 feet



SOURCES:
Parcel, road, soil and stream data
from County of Marin.
Orthophotography by DigitalGlobe
Inc., 2007.
NOTE: This map is an enlarge-
ment of smaller scale datasets.

 **RAY CARLSON**
AND ASSOCIATES, INC.
Mapping a Better World™